

Descriptive Data Sheet

PROJECT NAME

Riverstone Transit Center

PROJECT LOCATION

Coeur d'Alene, Idaho

SQUARE FOOTAGE

4 Acres | 2,500 SF

PROJECT SYNOPSIS

The new Riverstone Transit Center brings the administrative staff and bus services for City Link and Paratransit to a central hub location to provide riders with a safe, clean, and convenient experience.

The project includes an Administrative Building, outdoor public restrooms and a covered waiting shelter for riders. The site includes landscaped pathways to each of the eight bus loading areas, as well as 80 parking stalls and additional space for future growth.

MULTI-MODAL TRANSIT HUB THROUGH TIME

Centuries ago, this site was encompassed by the heart of the original, vast territory of the Coeur d'Alene Tribe and served as a hub for regional trading and traveling Tribal factions. Today, the Transit Center's analogous function provides a multi-modal transportation hub with regional reach via the adjacent pedestrian trail, interstate highway, state route, riverway, and county-wide bus transit system.

RIDER EQUITY

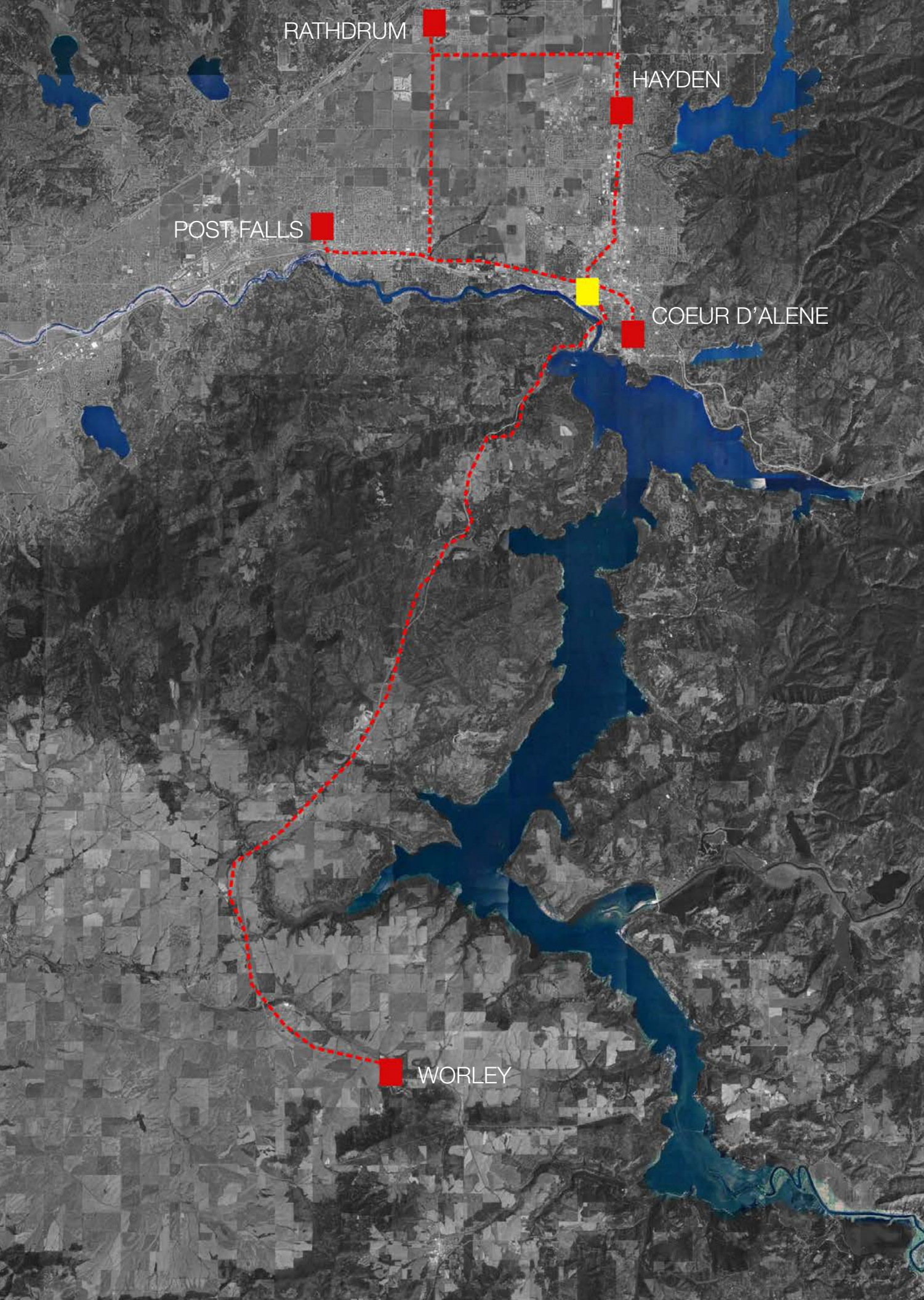
In support of the mission to remove barriers that prevent people with disabilities from using the transportation system, the previously used gravel lot in this location was upgraded significantly. Accessible parking, pathways, restrooms, and Paratransit support services all promote rider equity.

DESIGN

Knitting together the threefold program under one roof enables adequate separation, yet essential connectivity. The passenger shelter has a delicate balance of needs; providing refuge from elements and cold southerly winds, while encouraging only brief rider stays. The durable concrete restroom masses contribute to the open shelter, receiving daylight from clerestories above. Within the Administration Building, the transit operations offices remain separated from daily ridership but enjoy ample views out to monitor activity. Corten steel fins provide solar shading and serve as a mechanism for defensible space.

The facility's unique composition of material, space and landscaping instills a sense of ownership in the community and inspires newcomers to utilize the transit system.





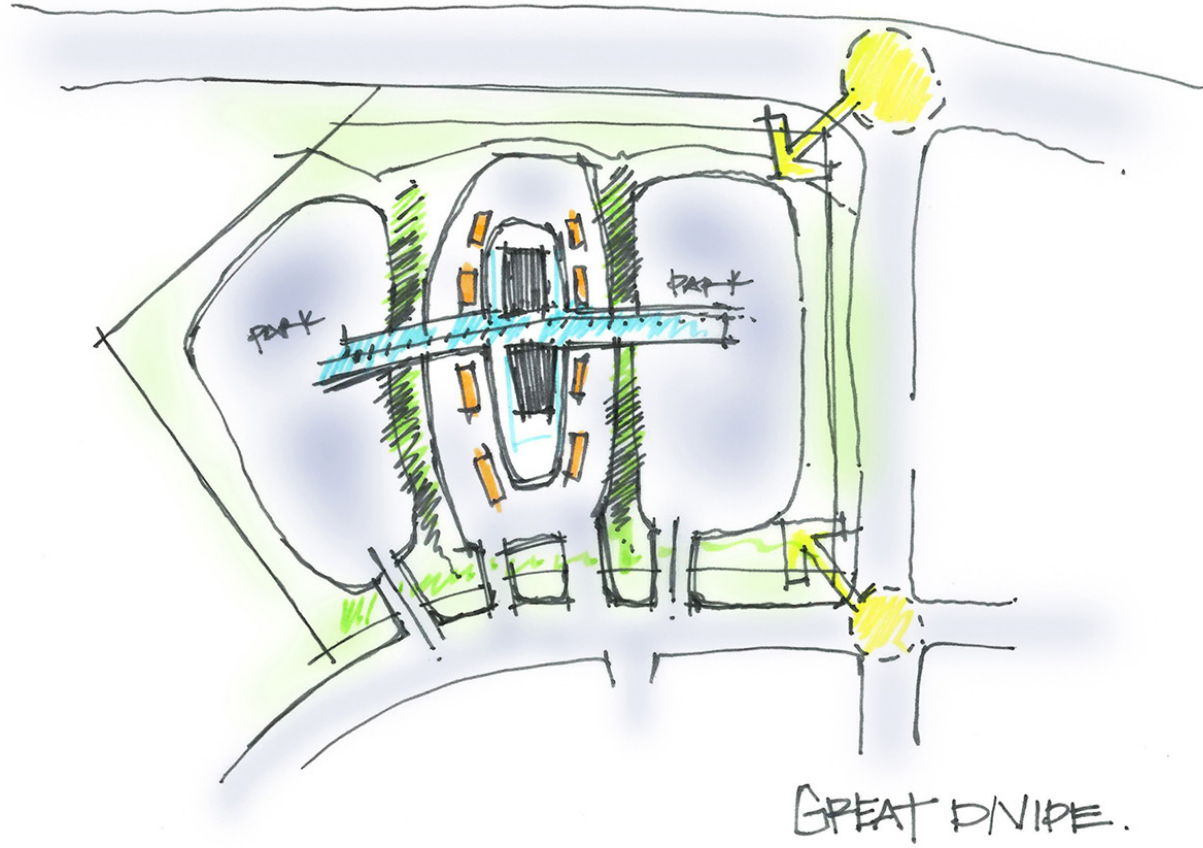
Multi-Modal Connections

Bridging Communities

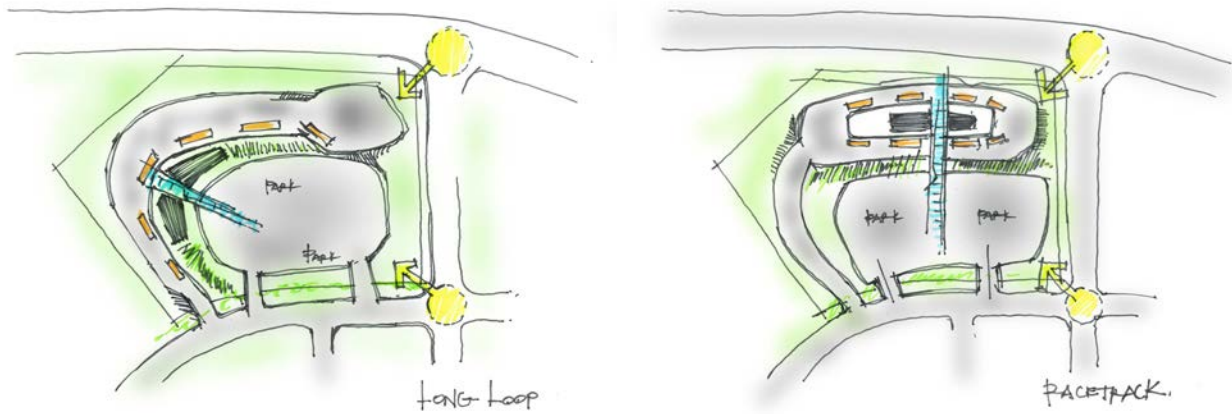
- City Link Transit
- Bike & Pedestrian

Organizational Options

Bridging Communities

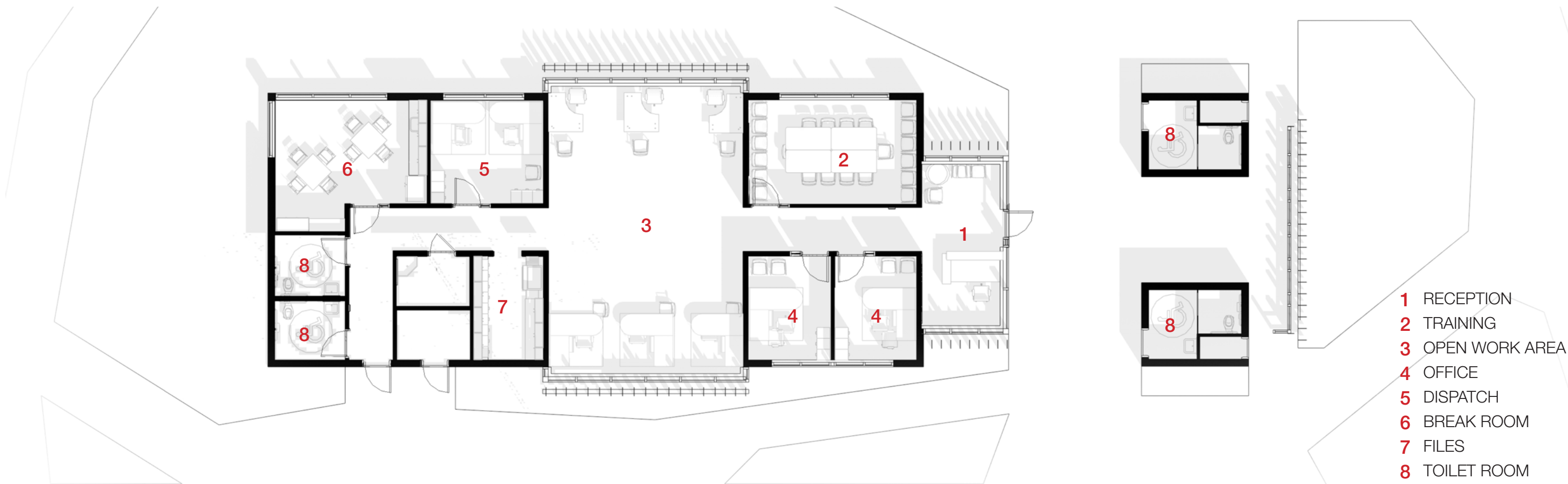


Pre-design explorations quickly indicated placing the transit hub central between parking; lessening pedestrian walking distance.



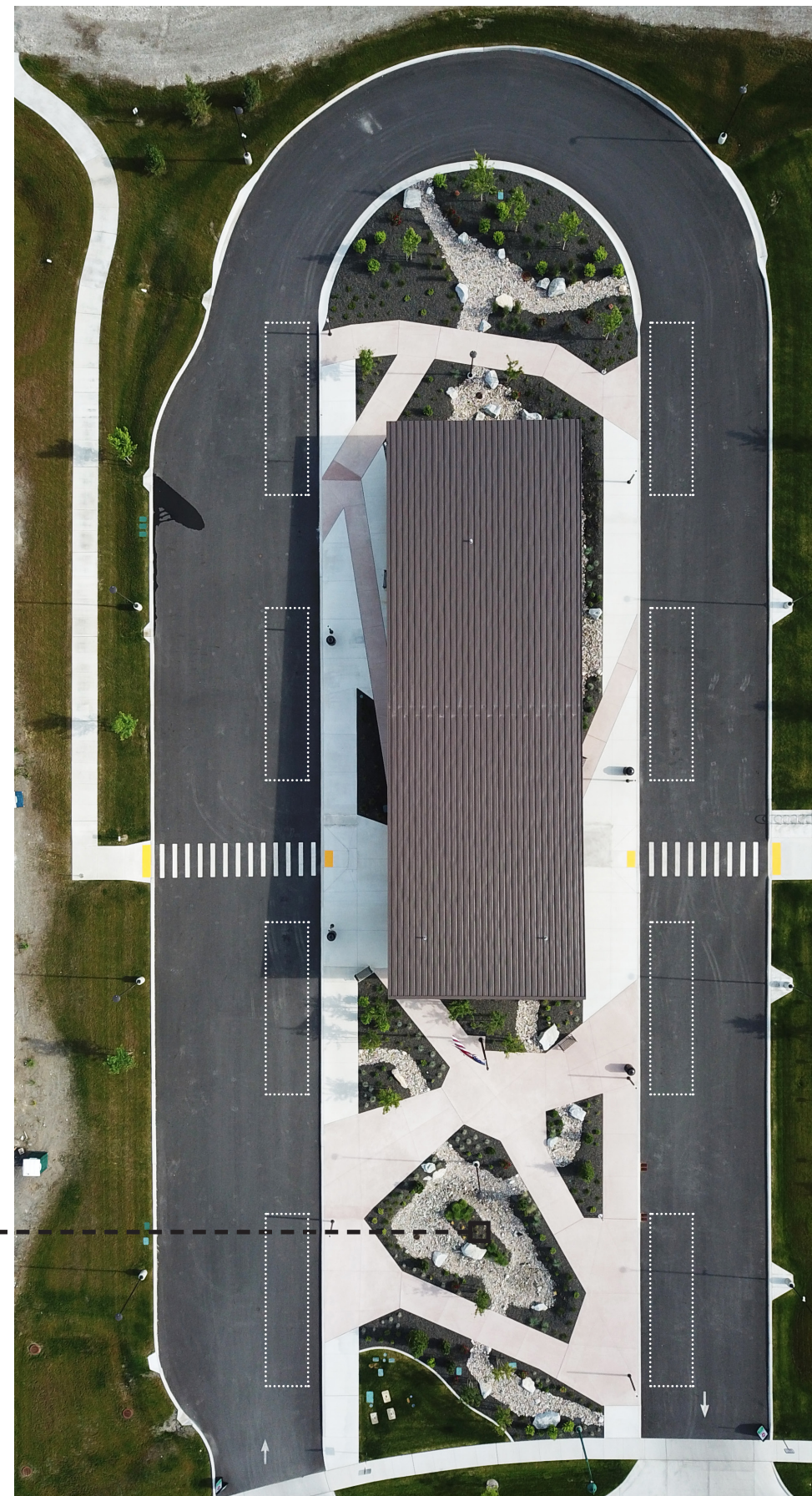


2400



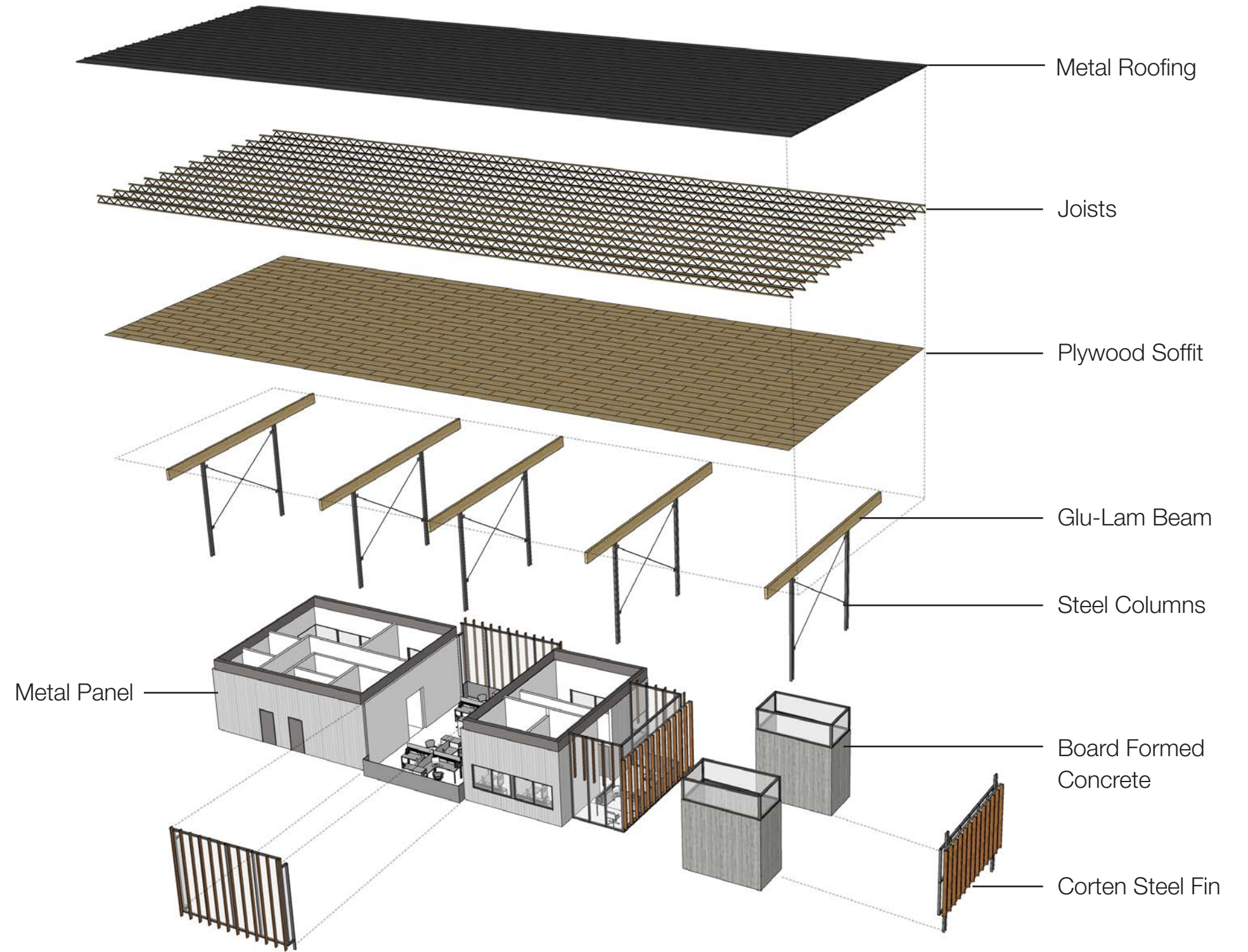


- River Rock
- Specimen Boulder
- Native Fir
- Crushed Granite
- Xeriscape Native Plantings



Landscape Connections

Regional Materiality



Materiality
Local Materials

Regional Palette
Contextual Material Systems





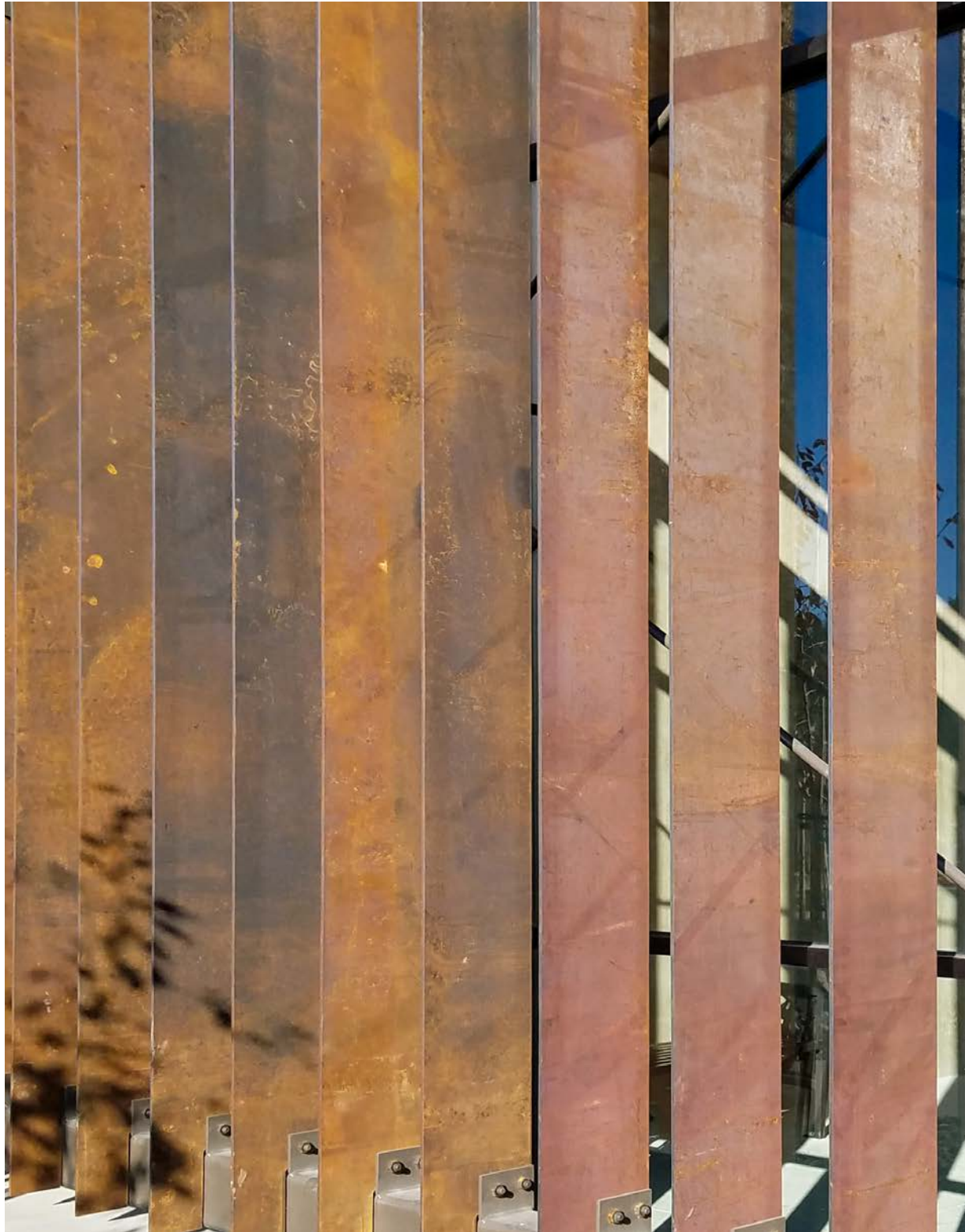
Passive Observation

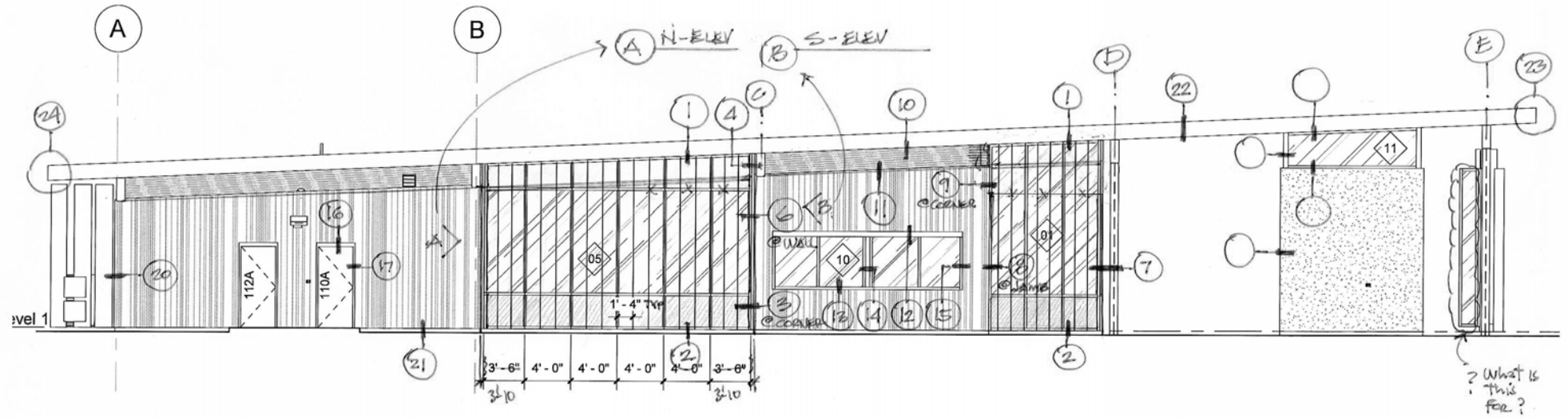
Transparency Creates Security



Passive Observation

Transparency Creates Security





Crafted Detailing

Human Scale Elements



Communal Beacon

